

FREEHOLD



House - Semi-Detached (EPC Rating: C)

125 RAEBURN ROAD, SIDCUP, DA15 8RE

Guide price

£600,000

Westwood
PROPERTY SERVICES



4 Bedroom House - Semi-Detached located in Sidcup

GUIDE PRICE £600,000 - £625,000 Westwood Property Services are pleased to offer for sale this extended 4 bedroom semi-detached home. Positioned in a desirable location which is within the catchment for many popular Schools, the accommodation on offer comprises entrance hall, through lounge measuring 24'4 x 11'7, modern kitchen/diner, ground floor WC, four family sized first floor bedrooms and a larger than average four piece bathroom suite. The well maintained rear garden is West facing and includes mature plants and shrubs. Additional points to note include a driveway to the front, gas central heating and double glazing. Presenting as an ideal family home we highly recommend your early viewing.

Entrance Hall

Living Room
24'4" x 11'7"

Kitchen/ Dining Room
30'5" x 6'6"

Downstairs W/C

First Floor Landing

Bedroom One
12'0" x 11'8"

Bedroom Two
11'8" x 9'8"

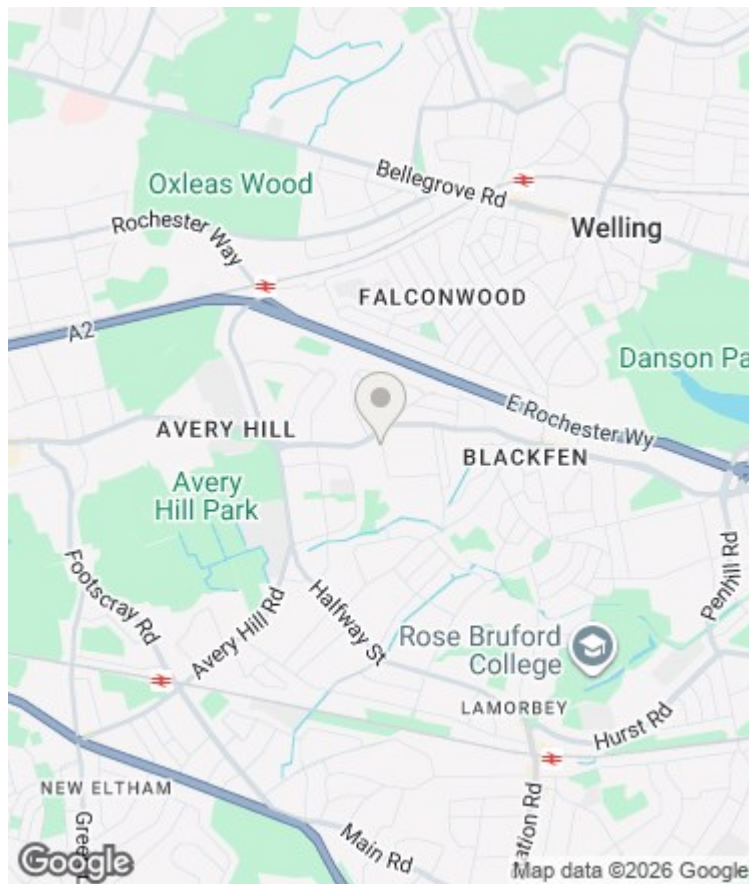
Bedroom Three
12'0" x 6'5"

Bedroom Four
8'6" x 5'11"

Family Bathroom

Garden
44'3" x 28'2"

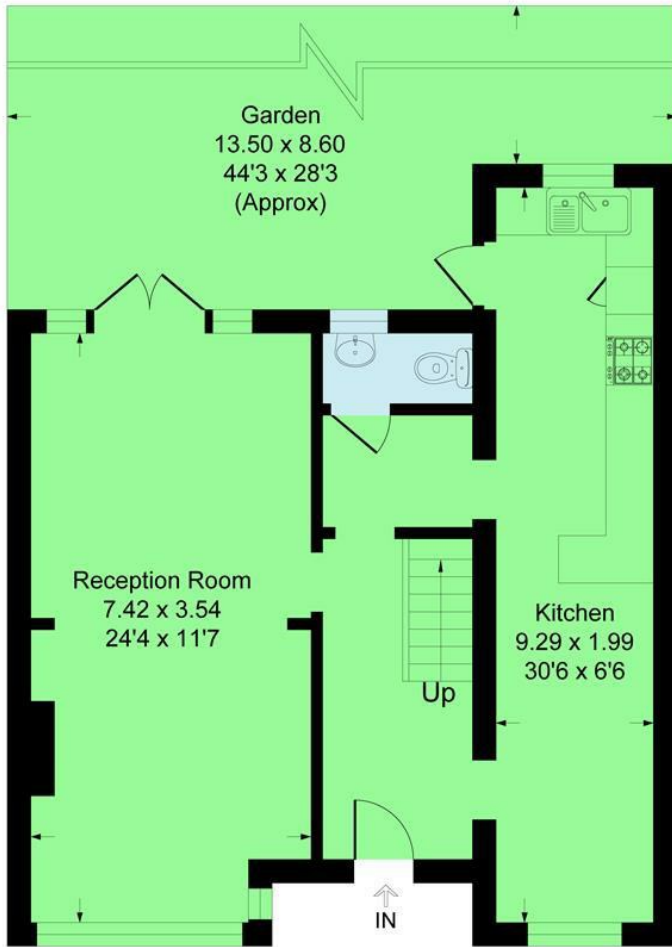
Driveway



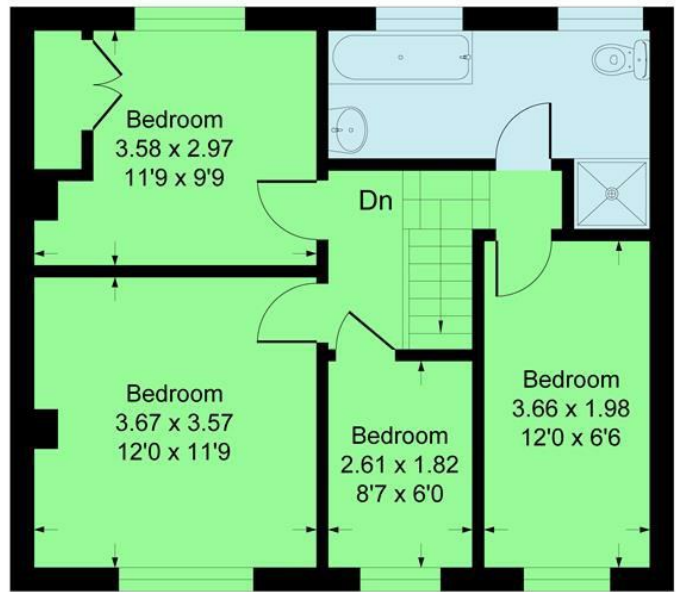
SIDCUP | 2 CENTRAL PARADE SIDCUP, GREATER LONDON, DA15 7DH

Raeburn Road, DA15

Approximate Gross Internal Area 112.6 sq m / 1212 sq ft



Ground Floor



First Floor



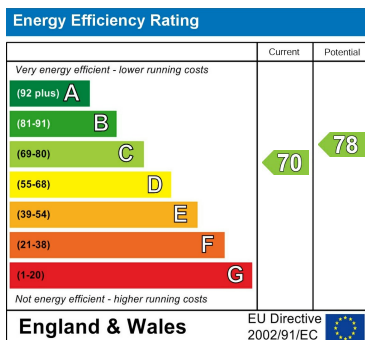
This plan is for layout guidance only. Not drawn to scale unless stated. Windows and door openings are approximate. Whilst every care is taken in the preparation of this plan, please check all dimensions, shapes and compass bearings before making any decisions reliant upon them.
Produced By Planpix



Council Tax Band

D

Energy Performance Graph



Call us on

020 8301 5511

sales@westwoodpropertyservices.co.uk

Agents Note: Whilst every care has been taken to prepare these particulars, they are for guidance purposes only. All measurements are approximate and are for general guidance purposes only and whilst every care has been taken to ensure their accuracy, they should not be relied upon and potential buyers are advised to recheck the measurements.